



# Passenger Rail Possibilities for Vermont

Presentation to the  
House Committee on Transportation  
February 20<sup>th</sup>, 2019



AllEarth Rail is a passenger railroad equipment company.

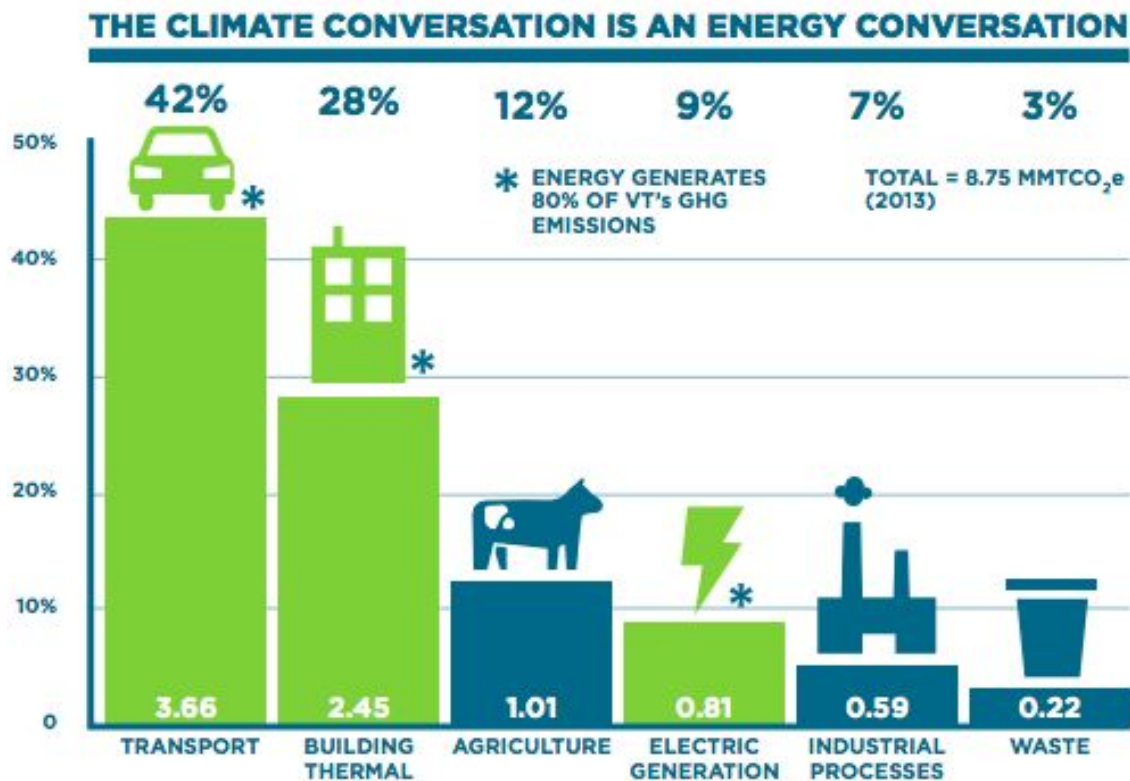


We have invested in a fleet of self-propelled rail diesel cars (RDC) for passenger rail service here in Vermont.

# Community Rail Drives Local Economic Development

- Community rail provides enormous benefits to downtowns where stations are located. A study by *Dallas Area Rapid Transit* concludes that every \$1 of public funds invested in transit infrastructure attracts \$7 in private investment.
- US Dept. of Commerce studies show that every \$1 invested in railroads supports \$10 in local economic activity.
- New train stations attract employers, workforce housing, and new retail stores, services and other amenities.

# The Transportation sector is the largest contributor to Vermont's greenhouse gas emissions - 42%



Source: [2017 Energy Action Network Annual Report](#)

# Going Back to the Future!

- Vermont has a long history and tradition of support for our railroad system, allowing towns like Barre, Rutland, White River Jct., St. Albans, and Essex Jct. to flourish.
- \$100+ million has been invested in recent years to improve our rail infrastructure, allowing for expansion of passenger service.
- 24 major employers are located next to existing railroad tracks.
- Today, the Budd cars offer the opportunity to revitalize community rail service.



# Public Transit attracts Millennials and Entrepreneurs

According to a recent [Washington Post article](#):

*“Tech industry leaders say that firms and entrepreneurs are drawn to New York because of its educated population and access to capital. Its arts and culture, restaurants and bars, and reliance on **public transit** have brought in a massive talent pool of skilled workers who fuel innovation.”*

And [a recent study](#) by the American Public Transit Association concludes:

*“Communities that attract Millennials have a multitude of transportation choices, as proven by Millennial hotspots, popular zip codes where residents have self-selected into a multi-modal lifestyle.”*

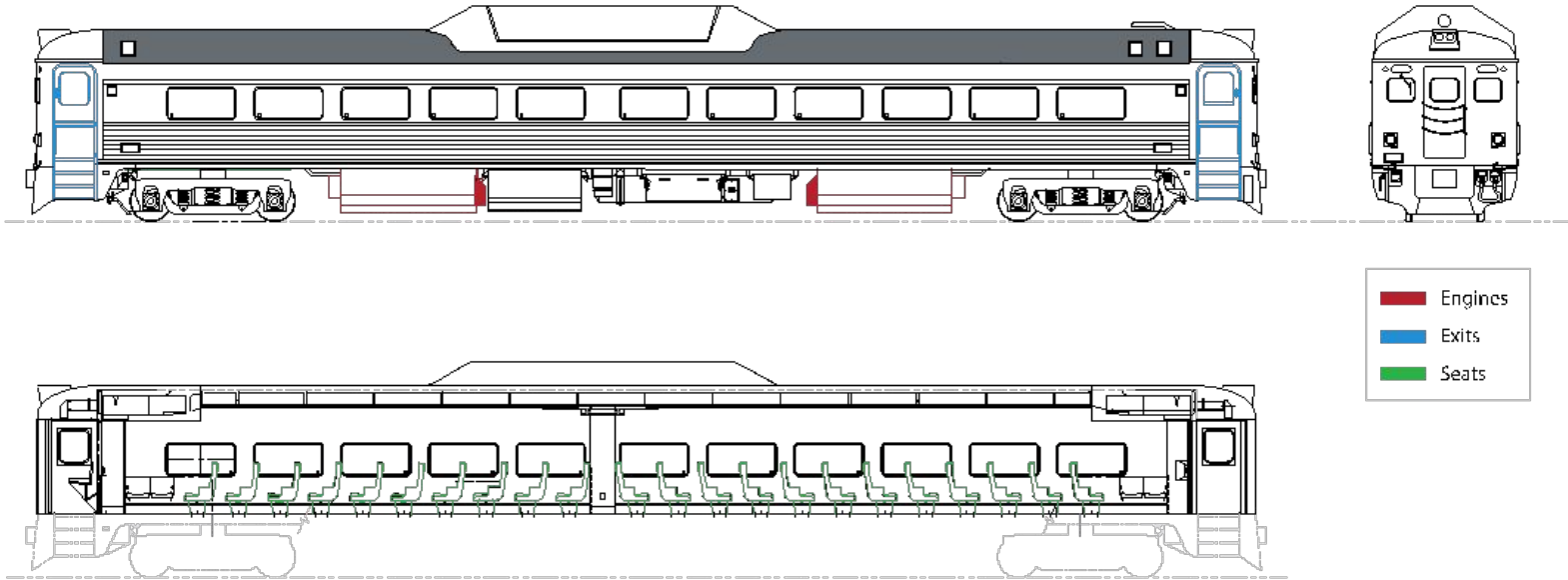
# Vermont Railroads and Stations



**More than 80% of  
Vermonters live within a mile  
of rail infrastructure**



## Diagram of an AllEarth Rail Budd car



- Seating capacity: up to 96 passengers
- Individual motorization – which means they travel without locomotives.
- Two EPA certified 360 horsepower diesel engines, one at each end
- Fuel efficiency: 2.5+ miles per gallon





← EXIT

# Potential Operators

- AllEarth Rail intends to partner with an operator to deploy our Budd cars for passenger service in Vermont
- From [2017 Feasibility Study by Vermont Agency of Transportation](#) - “In the U.S., there are several examples for potential commuter rail operators. Operators include state agencies, Amtrak, freight railroads, and private sector companies.” p. 72

# The “Vermont Way”

*The Budd rail cars offer flexibility, low operating costs, and reliability for the short-haul passenger rail service so needed in Vermont.*

*They can be operated cost-effectively in a practical, safe, people-focused and planet-friendly way - ‘the Vermont way’ as we call it.*

*The Budd cars are here and ready to roll. It is time to make this vision a reality here in Vermont.*

David Blittersdorf  
Founder, AllEarth Rail

# Thank You

For more information, please  
visit [www.AllEarthRail.com](http://www.AllEarthRail.com)

